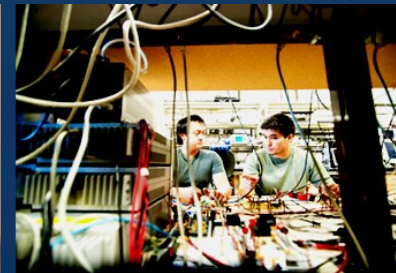
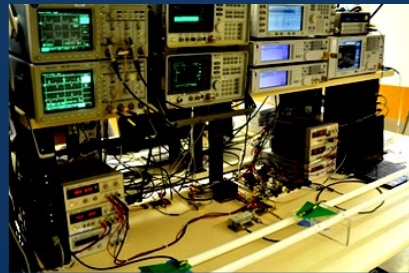


ECE

undergraduate
student handbook
university of california
san diego 2013-2014



« TABLE OF CONTENTS »

3

CONTACT INFORMATION

Staff Advisors & Advising Hours 3

4

CATALOG INFORMATION

ECE Program Goals 4 • Undergraduate Program Overview 5

6

MAJOR INFORMATION

B.S. Electrical Engineering 6 • B.S. Engineering Physics 8 • EE & EP Elective Policy 9 • B.S. Computer Engineering 10
B.A. EE & Society 12 • Admissions, Policies, & Procedures 14 • ECE Honors Program 16 • 5-Year BS/MS Program 16

18

COURSE DESCRIPTIONS

Lower Division 20-21 • Upper Division 21-24

25

COURSE PLANS & WORKSHEETS

Course Plans: Freshman 4-year 26-27 • Transfer 3-year 28-29

Worksheets: Electrical Engineering 30 • Engineering Physics 31 • Computer Engineering 32 • EE & Society 33

34

RESOURCES

Faculty Information 34 • ECE Tutoring 35 • Important Links 35

«ACADEMIC & ADMINISTRATIVE CALENDAR 13-14»

-FALL QUARTER 2013-

Fall Quarter Begins	Monday, September 23
Instruction Begins	Thursday, September 26
Veteran's Day Holiday	Monday, November 11
Thanksgiving Holiday	Thursday - Friday, November 28-29
Instruction Ends	Friday, December 6
Final Exams	Monday - Saturday, December 9-14
Fall Quarter Ends	Saturday, December 14
Christmas Holiday	Tuesday-Wednesday, December 24-25
New Year Holiday	Tuesday-Wednesday, December 31-January 1

-WINTER QUARTER 2014-

Winter Quarter Begins	Thursday, January 2
Instruction Begins	Monday, January 6
Martin Luther King, Jr. Holiday	Monday, January 20
President's Day Holiday	Monday, February 17
Instruction Ends	Friday, March 14
Final Exams	Monday - Saturday, March 17-22
Winter Quarter Ends	Saturday, March 22

-SPRING QUARTER 2014-

Spring Quarter Begins	Thursday, March 27
Cesar Chavez Holiday	Friday, March 28
Instruction Begins	Monday, March 31
Memorial Day Observance	Monday, May 26
Instruction Ends	Friday, June 6
Final Exams	Monday - Friday, June 9-13
Spring Quarter Ends	Friday, June 13
Commencement.....	Saturday-Sunday, June 14-15
Independence Day	Friday, July 4, 2014
Labor Day	Monday, September 1, 2014

«ECE UNDERGRADUATE STUDENT AFFAIRS»

MISSION STATEMENT»

The mission of ECE Student Affairs is to facilitate ECE faculty, graduate and undergraduate students in understanding and navigating UCSD administrative processes in order to achieve success in their research, educational and professional endeavors, and to prepare students to become engaged and constructive members of a diverse, dynamic and global society.

OBJECTIVES»

1. To foster a healthy and cooperative community for ECE faculty, students and staff
2. To motivate and inspire students to be independent, intelligent and innovative engineering professionals
3. To build relationships with alumni and industry partners

STAFF ADVISORS»

MYDA PRADO

Undergraduate Student Affairs Advisor
Jacobs Hall 2906
858-822-0273

CHYNNA OBANA

Assistant Undergraduate Student Affairs Advisor
Jacobs Hall 2906
858-534-6395

»ADVISING HOURS FA13-SP14

»Monday-Friday: 9:00 - 11:30 am &
1-4 pm
CLOSED 1130 am -1 pm & Wednesdays 10-11 am

VIRTUAL ADVISING CENTER (VAC)

Sign-in on your triton account at: vac.ucsd.edu
Emails sent by current students to the Undergraduate Advisors' UCSD email accounts will NOT be answered.

»The Virtual Advising Center is open 24 hours a day/7 days a week except on holidays. Post your questions there, and an academic counselor will respond within 24-72 business hours.

ERIC LARA

Student Affairs Director
Jacobs Hall 2711
elara@ece.ucsd.edu

»By appointment only.

«ELECTRICAL & COMPUTER ENGINEERING»

All courses, faculty listings, and curricular and degree requirements described herein are subject to change or deletion without notice. Updates to curricular sections may be found on the Academic Senate website: <http://senate.ucsd.edu/Curriculum/Updates.htm>

PROGRAM MISSION STATEMENT»

To educate tomorrow's technology leaders.

PROGRAM EDUCATIONAL OBJECTIVES»

- »To prepare students for graduate study in engineering or other professional fields.
- »To prepare students to excel in technical careers and apply their knowledge in the professional arena.
- »To prepare students to be leaders in their field, making technical contributions as well as having more general impact on society at large.

PROGRAM OUTCOMES & ASSESSMENT»

Program outcomes have been established based on the Program Educational Objectives. Graduates of the ECE Program in Electrical Engineering are expected to have

1. an understanding of the underlying principles of, and an ability to apply knowledge of mathematics, science, and engineering to electrical engineering problems
2. an ability to design and conduct experiments, as well as to analyze and interpret data
3. a knowledge of electrical engineering safety issues
4. an ability to design a system, component, or process to meet desired needs
5.
 - a. an ability to collaborate effectively with others
 - b. an ability to function on multidisciplinary teams
6. an ability to identify, formulate, and solve engineering problems
7. an ability to use the techniques, skills, and modern engineering tools necessary for engineering practice, including familiarity with computer programming and information technology
8. an understanding of professional and ethical responsibility
9.
 - a. an ability to communicate effectively in writing
 - b. an ability to communicate effectively in speech
 - c. an ability to communicate effectively with visual means
10. the broad education necessary to understand the impact of engineering solutions in a global and societal context
11. a recognition of the need for, and the ability to engage in, lifelong learning
12. a knowledge of contemporary issues

«THE UNDERGRADUATE PROGRAMS»

IT IS IMPERATIVE THAT STUDENTS DISCUSS THEIR CURRICULUM WITH THE APPROPRIATE DEPARTMENTAL ADVISER IMMEDIATELY UPON ENTRANCE TO UC SAN DIEGO, AND THEN AT LEAST ONCE A YEAR UNTIL GRADUATION.

The Department of Electrical and Computer Engineering offers undergraduate programs leading to the BS in electrical engineering, engineering physics, and computer engineering, and the BA in electrical engineering and society. Each of these programs can be tailored to provide preparation for graduate study or employment in a wide range of fields. The Electrical Engineering Program is accredited by the Accreditation Board for Engineering and Technology (ABET).

The **Electrical Engineering Program** has a common lower division and a very flexible structure in the upper division. After the lower-division core, all students take seven breadth courses during the junior year. They must then satisfy a depth requirement, which can be met with five courses focused on some specialty, and a design requirement of at least one project course. The remainder of the program consists of six electives, which may range as widely or as narrowly as needed. The **Engineering Physics Program** is conducted in cooperation with the Department of Physics. Its structure is very similar to that of electrical engineering except the depth requirement includes seven courses and there are only four electives. The **Computer Engineering Program** is conducted jointly with the Department of Computer Science and Engineering. It has a more prescribed structure. The program encompasses the study of hardware design, data storage, computer architecture, assembly languages, and the design of computers for engineering, information retrieval, and scientific research. The **BA—Electrical Engineering and Society Program** intends to better prepare engineering students in the areas of social sciences and the humanities, as a response to the globalization of engineering and technology. We recognize that “engineering only” training may not be sufficient when students seek alternate career paths besides engineering upon graduation, such as in the law, finance, and public policy sectors.

For information about the program and about academic advising, students are referred to the section on ECE departmental regulations. In order to complete the programs in a timely fashion, students must plan their courses carefully, starting in their freshman year. Students should have sufficient background in high school mathematics so that they can take freshman calculus in the first quarter.

For graduation, each student must also satisfy general-education requirements determined by the student’s college. The six colleges at UC San Diego require widely different numbers of general-education courses. Students should choose their college carefully, considering the special nature of the college and the breadth of education required. They should realize that some colleges require considerably more courses than others. Students wishing to transfer to another college should see their college adviser.

Graduates of community colleges may enter ECE programs in the junior year. However, transfer students should be particularly mindful of the freshman and sophomore course requirements when planning their programs.

These programs have strong components in laboratory experiments and in the use of computers throughout the curricula. In addition, the department is committed to exposing students to the nature of engineering design. This is accomplished throughout the curricula by use of design-oriented homework problems, by exposure to engineering problems in lectures, by courses that emphasize student-initiated projects in both laboratory and computer courses, and finally by senior design-project courses in which teams of students work to solve an engineering design problem, often brought in from industry.

«B.S. ELECTRICAL ENGINEERING»

Students must complete 180 units for graduation, including the general-education requirements (GER). Note that 144 units (excluding GER) are required.

LOWER DIVISION REQUIREMENTS (68 UNITS)»

24 units Mathematics: MATH 20A-B-C-D-E-F

16 units Physics: PHYS 2A-B-C-D or PHYS 4A-B-C-D-E. MATH 20A is a prerequisite for PHYS 2A. Students whose performance on the math placement test permits them to start with MATH 20B or higher may take PHYS 2A in the fall of their freshman year.

4 units Chemistry: CHEM 6A

4 units Programming: ECE 15

20 units Electrical Engineering: ECE 25,30, 35, 45, & 65

ADDITIONAL NOTES:

1. Students with AP Math credit are strongly advised to take MATH 20B in the fall quarter, leaving room for a GER in the winter quarter.
2. The ECE undergraduate website shows several scheduling options. Please refer to the website and consult with the staff advisers in the undergraduate offices in Jacobs Hall 2906.

UPPER DIVISION REQUIREMENTS (76 UNITS)»

A. Breadth (28 units)

Courses required of ALL electrical engineering majors: ECE 100, 101, 102, 103, 107, 108, & 109

They are an assumed prerequisite for senior-level courses, even if they are not explicitly required. Although the courses are largely independent, there are some prerequisites. Students who delay some of the breadth courses into the spring should be careful that it does not delay their depth sequence. For the ECE 109 requirement, credit will not be allowed for ECON 120A, MATH 180A-B, 183, or 186.

B. Design (4 units)

NOTE: In order to fulfill the design requirement, students must complete one of the following courses with a grade C– or better. Graduation will not be approved until a written copy of the design project is submitted to the ECE undergraduate office. *ECE 111,118,191 cannot be used to satisfy both the design and depth requirements.*

The electrical engineering design requirement can be fulfilled in any of the following 3 ways:

1. ECE 191. Engineering Group Design Project
2. ECE 190. Engineering Design. »Requires the department stamp. »Specifications & enrollment forms available in the undergraduate office
3. ECE 111. Advanced Digital Design Project *OR* ECE 118. Computer Interfacing *OR* ECE 155B or 155C. Digital Recording Projects

C. Electives (24 units)

»3 upper-division engineering, mathematics, or physics courses

»3 additional electives which students may use to broaden their professional goals

For additional information, please refer to the section on [“Elective Policy for Electrical Engineering and Engineering Physics Majors.”](#)

D. Depth (20 units)

Students must complete a “depth requirement” of 5 quarter-courses to provide a focus for their studies. This set must include a clear chain of study that depends on the “breadth” courses. Students may choose one of the approved depth sequences listed below, or propose another with the approval of the department. For depth sequences that list 4 courses, students must complete an additional upper-division ECE course for the remaining 5th depth course requirement. Courses that are used to satisfy other major requirements such as ECE 100-109 are excluded. Guidelines for meeting the depth requirement can be obtained from the undergraduate office. *ECE 111 & 118 cannot be used to satisfy both the design and depth requirements.*

Communication Systems

ECE 153, ECE 154A, ECE 154B, ECE 154C, & ECE 158A

For the following depth sequences, students must select an additional upper-division ECE course to complete the 5th depth course requirement:

Electronics Circuits & Systems

ECE 163, ECE 164, ECE 165, ECE 166

Electronic Devices & Materials

ECE 135A, ECE 135B, ECE 136L, ECE 183

Machine Learning & Controls

ECE 171A, ECE 174, ECE 175A, one of ECE 171B, ECE 172A, or ECE175B

Photonics

ECE 181, ECE 182, ECE 183, & either ECE 184 or ECE 185

Signal & Image Processing

ECE 153, ECE 161A, ECE 161B, ECE 161C

Computer System Design

CSE 141, ECE 165 & any two of ECE 118, ECE 158A, ECE 111, & CSE 143

«B.S. ENGINEERING PHYSICS»

Students must complete 180 units for graduation, including the general-education requirements (GER). Note that 146 units (excluding GER) are required.

All students will initially be placed in premajor status. Upon successful completion of the following courses (with a minimum 2.0 GPA by the end of the first 3 quarters if a transfer student, 6 quarters if an incoming freshman), students will be admitted into full engineering physics major status. **1. MATH 20A-B-C 2. PHYS 2A-B 3. ECE 15, 25, & 35**

To initiate the change from premajor status to full major status, transfer students must see the ECE undergraduate adviser by the end of their 3rd quarter at UC San Diego; incoming freshmen by the end of their 6th quarter. Please refer to the section [“Undergraduate Regulations and Requirements”](#) for important details.

LOWER DIVISION REQUIREMENTS (70 UNITS)»

24 units Mathematics: MATH 20A-B-C-D-E-F

16 units Physics: PHYS 2A-B-C-D or PHYS 4A-B-C-D-E. MATH 20A is a prerequisite for PHYS 2A. Students whose performance on the math placement test permits them to start with MATH 20B or higher may take PHYS 2A in the fall of their freshman year.

2 units Physics Lab: PHYS 2DL

4 units Chemistry: CHEM 6A

4 units Programming: ECE 15

20 units Electrical Engineering: ECE 25,30, 35, 45, & 65

ADDITIONAL NOTES:

1. Students with AP Math credit are strongly advised to take MATH 20B in the fall quarter, leaving room for a GER in the winter quarter.
2. The ECE undergraduate website shows several scheduling options. Please refer to the website and consult with the staff advisers in the undergraduate offices in Jacobs Hall 2906.

UPPER DIVISION REQUIREMENTS (76 UNITS)»

A. Breadth (28 units)

Courses required of ALL engineering physics majors: ECE 100, 101, 102, 103, 107, 108, & 109

However, because of the scheduling of MATH 110A, PHYS 110A & 130A, they can only be taken in a specific order (please consult the ECE website). For the ECE 109 requirement, credit will not be allowed for ECON 120A, MATH 180A-B, 183, or 186.

B. Design (4 units)

NOTE: In order to fulfill the design requirement, students must complete one of the following courses with a grade C– or better. Graduation will not be approved until a written copy of the design project is submitted to the ECE undergraduate office. *ECE 111,118,191 cannot be used to satisfy both the design and depth requirements.*

The engineering physics design requirement can be fulfilled in any of the following 3 ways:

1. ECE 191.
Engineering Group
Design Project

2. ECE 190. Engineering Design.
»Requires the department stamp.
»Specifications & enrollment forms
available in the undergraduate office

3. ECE 111. Advanced Digital Design Project *OR*
ECE 118. Computer Interfacing *OR*
ECE 155B or 155C. Digital Recording Projects

C. Electives (16 units)

»1 upper-division engineering, mathematics, or physics courses

»3 additional electives which students may use to broaden their professional goals

For additional information, please refer to the section on [“Elective Policy for Electrical Engineering and Engineering Physics Majors.”](#)

D. Depth (28 units)

All BS engineering physics students are required to take PHYS 110A, 130A-B, 140A, MATH 110A, ECE 123 & 166; or ECE 135A & 135B; or ECE 182 & (181 or 183).

«ELECTIVE POLICY»

- FOR ELECTRICAL ENGINEERING & ENGINEERING PHYSICS MAJORS -

1. Technical Electives

Technical electives must be upper-division engineering, Math, or physics courses (except for the bioengineering track). At most 1 lower-division course in engineering may be used but it must receive prior approval from the ECE department. *Certain courses listed below are **not** allowed as electives because of overlap with ECE courses.*

Physics

Students may not receive upper-division elective credit for any lower-division physics courses.

Mathematics

MATH 180A overlaps ECE 109 and 153, and therefore will not qualify for elective credit of either type. MATH 183 or MATH 186 will not be allowed as an elective. MATH 163 will only be allowed as a professional elective. All lower-division mathematics is excluded from elective credit of either type.

Bioengineering

The following series of courses will provide "core" preparation in bioengineering and will satisfy up to five courses of the ECE elective requirements:

BILD 1, BILD 2, BE 100, BE 140A-B

The bioengineering department will guarantee admission to these courses for ECE students on a space available basis.

CSE

The following courses are excluded as electives: CSE 3, 4GS, 6GS, 5A, 8A-B, 11, 123A (duplicates ECE 158A), 140 (duplicates ECE 25), 140L (duplicates ECE 35), 143 (duplicates ECE 165). CSE 12, 20, and 21 will count toward the three professional electives ONLY.

Mechanical and Aerospace Engineering (MAE)

Credit will not be allowed for MAE 2, 3, 5, 8, 9, 20, 105, 139, 140, 143B, or 170.

Special Studies

Courses 195–199: At most 4 units of 195–199 may be used for elective credit.

2. Professional Electives

Normally these will be upper-division courses in engineering, mathematics, or physics. Students may also choose upper-division courses from other departments provide that they fit into a coherent professional program. In such cases, a lower-division prerequisite may be included in the electives. Courses other than upper-division engineering, mathematics, or physics must be justified in terms of such a program, and must be approved by a faculty adviser.

Biology and Chemistry

Of the 3 electives intended to allow for the professional diversity, 1 lower-division biology or chemistry course from BILD 1, 2, CHEM 6B-C may be counted for credit in combination with 2 upper-division biology or chemistry courses. Furthermore, this will count only if the student can demonstrate to a faculty adviser that they constitute part of a coherent plan for professional/career development.

Upper-division biology and chemistry courses will count toward the 3 professional electives but not the 3 math/physics/engineering electives.

Economics

•Suitable electives would include ECON 1 and 3 followed by the courses in one of the following tracks:

»Macroeconomics: ECON 110A-B

»Monetary economics: ECON 111, and another economics upper-division elective

•Economics 1 and 2 followed by two courses in one of the following tracks:

»Public and Environmental: ECON 118, 130, 131, 132, 133, 137, 145

»Labor and Human Resources: ECON 137, 139, 140

Note: ECON 100A can be substituted for ECON 2.

•ECON 1 and 100A followed by 2 courses in one of the following tracks:

»Microeconomics. ECON 100B-C

»Financial Markets. ECON 120B and 173A

»Operations Research. ECON 172A-B (after taking ECE 109 and MATH 20F)

»Human Resources: ECON 100B and 136

Note: ECON 120A, and 158-159 will not be allowed as professional electives. If Economics is chosen for professional electives, only 2 technical electives are required for electrical engineering majors.

«B.S. COMPUTER ENGINEERING»

Students wishing to pursue the computer engineering curriculum may do so in either the ECE or CSE department. The set of required courses and allowed electives is the same in both departments; please note that the curriculum requires twenty upper-division courses. The Computer Engineering Program requires a total of 136 units (not including the general-education requirements).

The Computer Engineering Program offers a strong emphasis on engineering mathematics and other basic engineering science as well as a firm grounding in computer science. Students should have sufficient background in high school mathematics so that they can take freshman calculus in their first quarter. Courses in high school physics and computer programming, although helpful, are not required for admission to the program.

LOWER DIVISION REQUIREMENTS (68 UNITS)»

20 units Mathematics: MATH 20A-B-C-D-F

12 units Physics: PHYS 2A-B-C or PHYS 4A-B-C. MATH 20A is a prerequisite for PHYS 2A. Students whose performance on the math placement test permits them to start with MATH 20B or higher may take PHYS 2A in the fall quarter of the freshman year. Students who receive high grades in both calculus and physics in high school may substitute the major's sequence, PHYS 4A-B-C for PHYS 2A-B-C.

24 units Computer Science: CSE 11 or 8B,* 12, 15L, CSE 20 or MATH 15A, CSE 21 or MATH 15B, CSE 30, and CSE 91.
*Students without any programming experience are advised to take CSE 8A, CSE 8AL, and then CSE 8B, CSE 8BL, instead of CSE 11. CSE 11 is a faster-paced version of CSE 8A and CSE 8B, and requires experience in programming with a compiled language.

12 units Electrical Engineering: ECE 35, ECE 45, ECE 65

UPPER DIVISION REQUIREMENTS (68 UNITS)»

A. All BS computer engineering students are required to take CSE 100 or MATH 176, CSE 101 or MATH 188, CSE 110, CSE 120, 140, 140L, 141, 141L.

B. In addition, all BS computer engineering students must fulfill the following upper-division ECE requirements:

-Engineering Probability and Statistics: ECE 109. This course can be taken in the sophomore year.

-Electronic Circuits and Systems: ECE 108. The department recommends that this course be taken in the junior year.

-Linear Systems: ECE 101.

C. Technical electives: All BS computer engineering students are required to take seven technical electives.

-One technical elective must be either ECE 111 or ECE 118.

-Of the remaining 6 technical electives, 5 must be ECE or CSE upper-division or graduate courses.

-The remaining course can be any computer science and engineering or electrical engineering upper-division or graduate course, or any other course listed under the section titled non-CSE/ECE electives. Other restrictions in the selection of technical electives are also given in the section "[Electives](#)."

NOTES FOR SELECTING & SCHEDULING CLASSES FOR BS COMPUTER ENGINEERING

ALL COURSES MUST BE TAKEN FOR A LETTER GRADE.

1. First Programming Course: CSE 11 is a faster-paced version of CSE 8A, CSE 8AL and CSE 8B. CSE 8B or CSE 11 must be taken before CSE 12.* Students may self-select which course they wish to take. Students without experience in programming in a compiled language are advised to take CSE 8A and CSE 8AL, and then CSE 8B, instead of CSE 11.

2. CSE 11, and CSE 20/MATH 15A can be taken in the same quarter. Please obtain department approval for enrollment permission at ugradinfo@cs.ucsd.edu.

3. CSE 15L and CSE 70 are new courses starting fall 2007.
4. CSE 15L must be completed before CSE 12.
5. Effective fall 2006, ECE 35 and ECE 45 are new courses in computer engineering. These courses replace ECE 53A and 53B, respectively.
6. Effective fall 2010, CSE 70 is renumbered to CSE 110 and is required for all CE majors. If a student completes CSE 70, they do not have to take CSE 110.
7. Effective fall 2011, students no longer must take PHYS 2D, CSE 105, CSE 130, CSE 131 and ECE 102.
8. For students admitted before fall 2011, CSE 105, CSE 130, CSE 131 and ECE 102 may be taken for upper-division technical elective credit.
9. Students must complete seven technical electives for a total of twenty-eight units. Five of the seven technical electives must be CSE or ECE upper-division courses.

ELECTIVES

The discipline of computer engineering interacts with a number of other disciplines in a mutually beneficial way. These disciplines include Mathematics, computer science, and cognitive science. The following is a list of upper-division courses from these and other disciplines that can be counted as technical electives.

At most 4 units of 197 may be used towards technical elective requirements. ECE/CSE 195 cannot be used towards course requirements. Undergraduate students must get instructor's permission and departmental stamp to enroll in a graduate course.

Students may not get duplicate credit for equivalent courses. The UC San Diego General Catalog should be consulted for equivalency information and any restrictions placed on the courses. Additional restrictions are noted below. Any deviation from this list *must be petitioned*.

Computer Science with a Specialization in Bioinformatics:

Students must petition department for technical elective credit not on approved list.

Mathematics

All upper-division courses except MATH 168A-B, 179A-B, 183, 184A-B, 189A-B, and 195-199. If a student has completed CSE 167, then he or she cannot get elective credit for MATH 155A. Students may receive elective credit for only one of the following courses: CSE 164A, MATH 174, MATH 173, PHYS 105A-B, MAE 107, CENG 100. No credit for any of these courses will be given if MATH 170A-B-C is taken. Students will receive credit for either MATH 166 or CSE 105 (but not both), either MATH 188 or CSE 101 (but not both), and either MATH 176 or CSE 100 (but not both).

Credit will be given for only one of the following: ECE 109 or MATH 183 or ECON 120A.

Electrical and Computer Engineering

All ECE upper-division courses except 195-199. Students may not get credit for both CSE 123A and ECE 158A or CSE 143 and ECE 165. Credit will be given for only one of the following: ECE 109 or MATH 183 or ECON 120A.

Cognitive Science

Sensation and Perception 101A, Learning, Memory, and Attention 101B, Language 101C, Distributed Cognition 102A, Cognitive Ethnography 102B, Cognitive Engineering 102C, Neuroanatomy and Physiology 107A, Systems Neuroscience 107B, Cognitive Neuroscience 107C, Programming Methods for Cognitive Science 108D, Neural Networks Models of Cognitive I 108E, Advanced Programming Methods for Cognitive Science 108F, Human Computer Interaction 120, Human Computer Interaction Programming 121, Natural and Artificial Symbolic Representational Systems 170, Neural Network Models of Cognition II 181, Representation, Search, and the Web 188.

Students may not get credit for both CSE 150 and Advanced Programming Methods for Cognitive Science 108F or for both CSE 151 and Artificial Intelligence Modeling II 182.

Mechanical and Aerospace Engineering (MAE)

All upper-division MAE courses except MAE 140 (ONLY Computer Science majors may take MAE 140), and MAE 195-199.

Students may receive elective credit for only one of the following courses: CSE 164A, MATH 174, MATH 173, PHYS 105A-B, CENG 100, MAE 107. Students may only get credit for one of the two courses, CSE 167 or MAE 152.

Economics

Microeconomics 100A-B-C, Game Theory 109, Macroeconomics 110A-B-C, Mathematical Economics 113, Econometrics 120A-B-C, Applied Econometrics 121, Decisions Under Uncertainty 171, Introduction to Operations Research 172A-B-C, Economic and Business Forecasting 178.

Credit will be given for only one of the following: ECE 109 or MATH 183 or Econ 120A.

Linguistics

Phonetics 110, Phonology I 111, Phonology II 115, Morphology 120, Syntax I 121, Syntax II 125, Semantics 130, Mathematical Analysis of Languages 160, Computers and Language 163, Computational Linguistics 165, Principles of Discourse and Dialog 169, Psycholinguistics 170, Language and the Brain 172, and Sociolinguistics 175.

Engineering

Principles of Team Engineering 100, Team Engineering Laboratory 100L, Team Engineering 101 (see course description under the Jacobs School of Engineering section).

Computer Science and Computer Engineering

Students are eligible to receive six units of technical elective credit for completing a combination of ENG 100 (two units) and ENG 100L (two units). Students must complete one quarter of ENG 100 for two units, and two quarters of ENG 100L for a total of four units. With this combination, students will get credit for one technical elective. To receive credit for two technical electives, students must complete one more quarter of ENG 100L. This credit can be applied to fulfill the technical elective requirements.

Music

Computer Music II 172, Audio Production: Mixing and Editing 173.

Psychology

Introduction to Engineering Psychology 161.

«B.A. ELECTRICAL ENGINEERING & SOCIETY»

Students must complete 180 units for graduation, including the general-education requirements (GER). Note that 144 units (excluding GER) are required.

LOWER DIVISION REQUIREMENTS (76 UNITS)»

24 units Mathematics: MATH 20A-B-C-D-E-F

16 units Physics: PHYS 2A-B-C-D or PHYS 4A-B-C-D-E. MATH 20A is a prerequisite for PHYS 2A. Students whose performance on the math placement test permits them to start with MATH 20B or higher may take PHYS 2A in the fall quarter of the freshman year.

4 units Chemistry: CHEM 6A

4 units Programming: ECE 15

20 units Electrical Engineering: ECE 25,30, 35, 45, & 65

8 units Elective Courses in Social Sciences & Humanities Studies: These can be prerequisite courses for the upper-division depth sequence in social sciences/humanities. For instance, for history studies, this can be 2 history lower-division courses (HILD 2,7,10–12). Historically oriented HUM, MMW, and CAT courses would count as well. At least one lower-division course should have a writing component. For economics studies, this can be 2 lower-division courses (ECON 1, and ECON 4 for the finance track); or one lower-division course (ECON 1) plus one upper-division course for the data analysis track. For political science, the following courses may be utilized: Poli Sci10, Poli Sci11, Poli Sci12, Poli Sci13, Poli Sci30. For sociology studies, students will choose 2 lower-division courses from SOCI 1A, 1B, and 30, of which 30 is highly recommended. Other courses in social sciences/humanities will be available after an agreement between ECE and the respective departments/programs are established and approved.

ADDITIONAL NOTES:

1. Students with AP Math credit are strongly advised to take MATH 20B in the fall quarter, leaving room for a GER in the winter quarter.
2. The ECE undergraduate website shows several scheduling options. Please refer to the website and consult with the staff advisers in the undergraduate offices in Jacobs Hall 2906.

UPPER DIVISION REQUIREMENTS (68 UNITS)»

A. Breadth (28 units)

Courses required of ALL electrical engineering majors: ECE 100, 101, 102, 103, 107, 108, & 109

They are required of all electrical engineering majors and they are an assumed prerequisite for senior-level courses, even if they are not explicitly required. Although the courses are largely independent, ECE 65 is a prerequisite for ECE 100 and 102. Students who delay some of the breadth courses until the spring should be careful to not have delayed their depth sequence.

B. Design (4 units)

NOTE: In order to fulfill the design requirement, students must complete one of the following courses with a grade C– or better. When taking this course, the student has the option of having a portion of the project related to his/her social sciences/humanities study. Graduation will not be approved until a written copy of the design project is submitted to the ECE undergraduate office.

The electrical engineering design requirement can be fulfilled in any of the following 3 ways:

1. ECE 191. Engineering Group Design Project
2. ECE 190. Engineering Design. »Requires the department stamp. »Specifications & enrollment forms available in the undergraduate office
3. ECE 111. Advanced Digital Design Project *OR* ECE 118. Computer Interfacing *OR* ECE 155B or 155C. Digital Recording Projects

C. Electives (12 units)

»3 upper-division engineering, mathematics, or physics courses

D. Depth (24 units)

Students must complete a depth requirement of at least six quarter courses to provide a focus for their studies. Sample depth programs for history and economics students are discussed below. Students may choose this demonstrated sequence or they may propose another with the approval of their faculty coadviser from the respective social sciences/humanities department.

History Studies (6 courses, 24 units)

At least 4 of these should belong to the specific field the student is pursuing (e.g., History of: East Asia, United States, Europe, Science, etc.).

At least 1 course should be in the field of history of science and technology.

At least 1 course should be a colloquium (i.e., a small course, with an emphasis on essay writing).

HISC 105. History of Environmentalism

HISC 106. The Scientific Revolution

HISC 107. The Emergence of Modern Science

HISC 108. Life Sciences in the Twentieth Century

HISC 109. Science in Western Civilization

HISC 111. The Atomic Bomb and the Atomic Age

HISC 115. History of Modern Medicine

HISC 131. Science Technology and Law

HISC 173/273. Darwin and Darwinism

HILD 2A. United States History

HILD 7A. Race and Ethnicity

HILD 10. East Asia: The Great Tradition

HILD 11. East Asia and the West

HILD 12. Twentieth-Century East Asia

HIUS 140. Economic History of the United States

HIUS 151. American Legal History since 1865

HIUS 187. Topics in American Social History

HIUS 148. American Cities in the Twentieth Century

HIEU 143. European Intellectual History

HIGR 222. Historical Scholarship on European History since 1850

HILA 102. Latin America in the Twentieth Century

Economics Studies

Track A: Finance (6 courses, 24 units)

-Intermediate Microeconomic sequence: Econ 100A-B-C

-Finance sequence: Econ 173A-B

-One elective course from the following: Econ 104, 105, 109, 113, 119, 120B, 141, 142, 143, 147, 150, 151, 155, 171, 172A

Track B: Data Analysis (7 courses, 28 units, one of them can be taken during lower-division years)

-Intermediate Microeconomic sequence: Econ 100A-B-C

-Data Analysis sequence: Econ 120B-C

-2 elective courses from the following: Econ 104, 105, 109, 119, 121, 125, 150, 151, 152, 155, 173A, 173B, 174, 176, 178

-Other upper-division courses for satisfying the depth sequences for other studies in social sciences/humanities will be available after an agreement is established between ECE and the respective department/program in social sciences/humanities.

Concentration in Science and Medicine (8 courses, 32 units)

Students will choose 2 lower-division courses from SOCI 1, 2, and 30, of which 30 is highly recommended; and 6 upper-division courses from the list below.

Lower Division

SOCI 1. Introduction to Sociology

SOCI 2. The Study of Society

SOCI 30. Science, Technology, and Society (highly recommended)

Upper Division

SOCI 113. Sociology of the AIDS Epidemic

SOCI 134A. The Making of Modern Medicine

SOCI 135. Medical Sociology

SOCI 136E. Sociology of Mental Illness: A Historical Approach

SOCI 136F. Sociology of Mental Illness in Contemporary Society

SOCI 138. Genetics and Society

SOCI 149. Sociology of the Environment

SOCI 167. Science and War

SOCI 168E. Sociology of Science

Concentration in Economy and Society (8 courses, 32 units)

Students will choose 2 lower-division courses from SOCI 1, 2, and 30, of which 30 is highly recommended; and 6 upper-division courses from the list below.

Lower Division

SOCI 1. Introduction to Sociology

SOCI 2. The Study of Society

SOCI 30. Science, Technology, and Society (highly recommended)

Upper Division

SOCI 125. Sociology of Immigration

SOCI 137. Sociology of Food

SOCI 121. Economy and Society

SOCI 132. Gender and Work

SOCI 139. Social Inequality: Class, Race, and Gender

SOCI 140F. Law and the Workplace

SOCI 148E. Inequality and Jobs

SOCI 152. Social Inequality and Public Policy

SOCI 163. Migration and the Law

SOCI 167. Science and War

SOCI 185. Globalization and Social Development

Sociology Studies (6 courses, 24 units)

Students may specialize in one of 4 departmental concentrations or complete the general sociology track. Students will choose 8 courses, 2 lower-division and 6 upper-division courses from their choice of concentrations in Science and Medicine, Law and Society, Economy and Society, International Studies, or General Sociology. **Note:** SOCI 30 is highly recommended for all tracks.

Concentration in International Studies (8 courses, 32 units)

Students will choose 2 lower-division courses from SOCI 1, 2, and 30, of which 30 is highly recommended; and 6 upper-division courses from the list below.

Lower Division

SOCI 1. Introduction to Sociology

SOCI 2. The Study of Society

SOCI 30. Science, Technology, and Society (highly recommended)

Upper Division

SOCI 111E. Human Rights: Principles and Problems

SOCI 111F. Human Rights: Practices and Cases

SOCI 130. Population and Society

SOCI 145. Violence and Society

SOCI 151. Comparative Race and Ethnic Relations

SOCI 148. Political Sociology

SOCI 153. Urban Sociology

SOCI 157. Religion in Contemporary Society

SOCI 158. Islam in the Modern World

SOCI 169. Citizenship, Community, and Culture

SOCI 176. War and Society

SOCI 177. International Terrorism

SOCI 178. The Holocaust

SOCI 179. Social Change

SOCI 180. Social Movements and Social Protest

SOCI 181. Modern Western Society

SOCI 182. Ethnicity and Indigenous Peoples in Latin America

SOCI 183. Minorities and Nations

SOCI 185. Globalization and Social Development

SOCI 187. African Societies Through Film

SOCI 188E. Community and Social Change in Africa

SOCI 188G. Chinese Society

SOCI 188F. Modern Jewish Societies and Israeli Society

SOCI 188D. Latin America: Society and Politics

SOCI 188J. Change in Modern South Africa

SOCI 189. Special Topics in Comparative-Historical Sociology

Concentration in Law and Society (8 courses, 32 units)

Students will choose 2 lower-division courses from SOCI 1, 2, and 30, of which 30 is highly recommended; and 6 upper-division courses from the list below.

Lower Division

SOCI 1. Introduction to Sociology

SOCI 2. The Study of Society

SOCI 30. Science, Technology, and Society (highly recommended)

Upper Division

SOCI 112. Social Psychology

SOCI 142. Social Deviance

SOCI 143. Suicide

SOCI 160E. Law and Culture

SOCI 140. Sociology of Law

SOCI 140F. Law and the Workplace

SOCI 141. Crime and Society

SOCI 147. Organizations, Society, and Social Justice

SOCI 159. Special Topics in Social Organizations and Institutions

SOCI 163. Migration and the Law

Political Science Studies (6 courses, 24 units)

Policy Analysis

At least 4 courses from

Poli Sci 160AA. Introduction to Policy Analysis

Poli Sci 160AB. Introduction to Policy Analysis

Poli Sci 162. Environmental Policy

Poli Sci 163. Analyzing Politics

Poli Sci 165. Special Topic: Policy Analysis

Poli Sci 168. Policy Assessment

Poli Sci 170A. Introductory Statistics for Political Science and Public Policy

and at least 2 courses from

Poli Sci 100H. Race and Ethnicity in American Politics

Poli Sci 102J. Advanced Topics in Urban Politics

Poli Sci 103A. California Government and Politics

Poli Sci 103B. Politics and Policymaking in Los Angeles

Poli Sci 103C. Politics and Policymaking/San Diego

Poli Sci 125A. Communities and the Environment

Poli Sci 126AA. Fundamentals of Political Economy: Modern Capitalism

Poli Sci 142A. United States Foreign Policy

Poli Sci 142J. National Security Strategy

Poli Sci 142M. US Foreign Policy/Regional Security

General Sociology (8 courses, 32 units)

Students will choose 2 lower-division courses from SOCI 1, 2, and 30, of which 30 is highly recommended; and 6 upper-division courses, including one from EACH of the following 4 concentrations:

Science and Medicine

Law and Society

Economy and Society

International Studies

«MINOR CURRICULA»

ECE offers three minors in accord with the general university policy that a minor requires five upper-division courses. Students must realize that these upper-division courses have extensive lower-division prerequisites (please consult the ECE undergraduate office). Students should also consult their college provost's office concerning the rules governing minors and programs of concentration.

Electrical Engineering: 20 units chosen from the breadth courses ECE 101, 102, 103, 107, 108, 109.

Engineering Physics: 20 units chosen from the junior year courses PHYS 110A, 130A, MATH 110A, ECE 101, 102, 103, 107, 108, 109.

Computer Engineering: 20 units chosen from the junior year courses ECE 102, 108, CSE 100, 101, 105, 120, 140, 140L, 141, 141L.

The department will consider other mixtures of upper-division ECE, CSE, physics, and Mathematics courses by petition.

«ADMISSIONS, POLICIES, & PROCEDURES»

FRESHMAN ELIGIBILITY

1. Computer Engineering

Effective fall 2013, freshman admission to the computer engineering major will be limited, as the major is currently considered impacted.

2. Electrical Engineering

Freshmen students who have declared Electrical Engineering on their application will be directly admitted into the major.

Please note: The department has requested impacted status for the electrical engineering major. This request is currently under review. If approved, admission to the major will be restricted; please plan accordingly. Please check the department website for more information on the status of this request, including the effective dates.

3. Engineering Physics

All students will initially be placed in premajor status. Upon successful completion of the following courses (with a minimum 2.0 GPA by the end of the first 3 quarters if a transfer student, 6quarters if an incoming freshman), students will be admitted into full Engineering-Physics major status.

1. MATH 20A-B-C
2. PHYS 2A-B
3. ECE 15, 25, and 35

To initiate the change from premajor status to full major status, transfer students must see the ECE undergraduate adviser by the end of their third quarter at UC San Diego; incoming freshmen by the end of their sixth quarter.

Please note: The department has requested impacted status for the electrical engineering major. This request is currently under review. If approved, admission to the major will be restricted; please plan accordingly. Please check the department website for more information on the status of this request, including the effective dates.

Please refer to the section "[Undergraduate Regulations and Requirements](#)" for important details.

TRANSFER ELIGIBILITY

It is strongly recommended that transfer students complete the following course preparation for engineering majors:

- Calculus I—for Science and Engineering (MATH 20A)
- Calculus II—for Science and Engineering (MATH 20B)
- Calculus and Analytic Geometry (MATH 20C)
- Differential Equations (MATH 20D)
- Linear Algebra (MATH 20F)

Complete calculus-based physics series with lab experience (PHYS 2A-B-C)

Chemistry 6A (except computer science and computer engineering majors)

Highest level of introductory computer programming language course offerings at the community college*

*Refer to the UC San Diego General Catalog to select major prerequisite requirement for computer language courses.

1. Computer Engineering

Applicants seeking admission as transfer students will be directly admitted into the Computer Engineering major. Effective fall 2015, transfer admission to the major will be restricted, as the major is currently considered impacted.

2. Electrical Engineering

Applicants seeking admission as transfer students will be directly admitted into the electrical engineering major.

Please note: The department has requested impacted status for the electrical engineering major. This request is currently under review. If approved, admission to the major will be restricted; please plan accordingly. Please check the department website for more information on the status of this request, including the effective dates.

3. Engineering Physics

Students are accepted into the premajor and must complete the following courses in order to be accepted into the engineering physics major: MATH 20A-B-C, PHYS 2A-B, ECE 15, 25, and 35. Students who wish to enter in the engineering physics major must contact the department before the beginning of the fall quarter, submitting course descriptions and transcripts for courses used to satisfy their lower-division requirements. Normally, admission will be for the fall quarter; students entering in the winter or spring quarter should be aware that scheduling difficulties may occur because upper-division sequences normally begin in the fall quarter.

Please note: The department has requested impacted status for the electrical engineering major. This request is currently under review. If approved, admission to the major will be restricted; please plan accordingly. Please check the department website for more information on the status of this request, including the effective dates.

ADVISING

Students are encouraged to complete an academic planning form and to discuss their curriculum with the appropriate departmental adviser immediately upon entrance to UC San Diego, and then every year until graduation. This is intended to help students in: a) their choice of depth sequence, b) their choice of electives, c) keeping up with changes in departmental requirements. A faculty adviser will be assigned by the ECE department undergraduate office.

IMPORTANT: GRADE REQUIREMENT IN THE MAJOR

Courses required for the major must be taken for a letter grade.

All major courses must be completed with a grade of C– or better.

A GPA of 2.0 is required in all upper-division courses in the major, including technical electives. The grade of D will not be considered an adequate prerequisite for any ECE course and will not be allowed for graduation. The engineering design requirement must be completed with a grade of C– or better.

«NEW TRANSFER STUDENTS IN ELECTRICAL ENGINEERING & ENGINEERING PHYSICS»

The entire curriculum is predicated on the idea of actively involving students in engineering from the time they enter as freshmen. The freshman courses have been carefully crafted to provide an overview of the engineering mindset with its interrelationships among physics, mathematics, problem solving, and computation. All later courses are specifically designed to build on this foundation. All transfer students should understand that the lower-division curriculum is demanding. Transfer students will be required to take all lower-division requirements or their equivalent. Transfer students are advised to consult the ECE website for sample recommended course schedules and for the ECE course requirement guide.

«NEW TRANSFER STUDENTS IN COMPUTER ENGINEERING»

Transfer students are advised to consult the ECE website for sample recommended course schedules and for the ECE course requirement guide.

Students who do not have any programming experience are encouraged to take the CSE 8A-B sequence instead of CSE 11. Experience has shown that most students who are not familiar with programming and take CSE 11 have to retake the class because the accelerated pace makes it difficult to learn the new material.

Note: Transfer students are encouraged to consult with the ECE undergraduate office for academic planning upon entrance to UC San Diego.

«ECE HONORS PROGRAM»

The ECE Undergraduate Honors Program is intended to give eligible students the opportunity to work closely with faculty in a project, and to honor the top graduating undergraduate students.

ELIGIBILITY FOR ADMISSIONS TO THE HONORS PROGRAM

1. Students with a minimum GPA of 3.5 in the major and 3.25 overall will be eligible to apply. Students may apply at the end of the winter quarter of their junior year and no later than the end of the second week of fall quarter of their senior year. No late applications will be accepted.
2. Students must submit a project proposal (sponsored by an ECE faculty member) to the honors program committee at the time of application.
3. The major GPA will include ALL lower division required for the major and all upper division required for the major that are completed at the time of application (a minimum of 24 units of upper-division course work).

REQUIREMENTS FOR AWARDS OF HONORS

1. Completion of all ECE requirements with a minimum GPA of 3.5 in the major based on grades through winter quarter of the senior year.
2. Formal participation (i.e., registration and attendance) in the ECE 290 graduate seminar program in the winter quarter of their senior year.
3. Completion of an 8-unit approved honors project (ECE 193H: Honors Project) and submission of a written report by the first day of spring quarter of the senior year. This project must contain enough design to satisfy the ECE BS four-unit design requirement.
4. The ECE honors committee will review each project final report and certify the projects that have been successfully completed at the honors level.

PROCEDURE FOR APPLICATION TO THE HONORS PROGRAM

Between the end of the winter quarter of their junior year and the second week of the fall quarter of their senior year, interested students must advise the department of their intention to participate by submitting a proposal for the honors project sponsored by an ECE faculty member. Admission to the honors program will be formally approved by the ECE honors committee based on GPA and the proposal.

UNIT CONSIDERATIONS

Except for the two-unit graduate seminar, this honors program does not increase a participant's total unit requirements. The honors project will satisfy the departmental design requirement and students may use four units of their honors project course as a technical elective.

«5-YEAR BS/MS PROGRAM»

Undergraduates in the ECE department who have maintained a good academic record in both departmental and overall course work are encouraged to participate in the five-year BS/MS program offered by the department. Participation in the program will permit students to complete the requirements for the MS degree within one year following receipt of the BS degree. Complete details regarding admission to and participation in the program are available from the ECE Undergraduate Affairs office.

ADMISSION TO THE PROGRAM

Students should submit an application for the BS/MS program, including three letters of recommendation, by the program deadline during the spring quarter of their junior year. Applications are available from the ECE Undergraduate Affairs office. No GRE's are required for application to the BS/MS program. A GPA of at least 3.0 both overall and in the major and strong letters of recommendation are required to be considered for program admission.

In the winter quarter of the senior year, applications of students admitted to the program will be forwarded by the department to the UC San Diego Office of Graduate Studies. Each student must submit the regular graduate application fee prior to the application deadline for their application to be processed. Students who have been accepted into the BS/MS program will automatically be admitted for graduate study beginning the following fall provided they maintain an overall GPA through the winter quarter of the senior year of at least 3.0. Upper-division (up to 12 units) or graduate courses taken during the senior year that are not used to satisfy undergraduate course requirements may be counted towards the 48 units required for the MS degree.

CONTINUATION IN THE PROGRAM

Once admitted to the BS/MS program, students must maintain a 3.0 cumulative GPA in all courses through the winter quarter of the senior year and in addition must at all times maintain a 3.0 cumulative GPA in their graduate course work. Students not satisfying these requirements may be re-evaluated for continuation in the program.

Admission for graduate study through the BS/MS program will be for the Master of Science degree only. Undergraduate students wishing to continue toward the PhD degree must apply and be evaluated according to the usual procedures and criteria for admission to the PhD program.

CURRICULUM

Students in the five-year BS/MS program must complete the same requirements as those in the regular MS program. Completion of the MS degree requirements within one year following receipt of the BS degree will generally require that students begin graduate course work in their senior year. All requirements for the BS degree should be completed by the end of the senior (fourth) year, and the BS degree awarded prior to the start of the fifth year. Courses taken in the senior year may be counted toward the BS degree requirements or the MS degree requirements, but not both. Students must have received their BS degree before they will be eligible to enroll as graduate students in the department.

The department offers graduate programs leading to the MS, and PhD degrees in electrical engineering. Students can be admitted into ECE graduate studies through either the MS or PhD programs.

The PhD program is strongly research oriented and is for students whose final degree objective is the PhD. If a student with a BS is admitted to this program, he or she will be expected to complete the requirements for the MS degree (outlined below) before beginning doctoral research. The MS is a technically intensive, research-oriented degree intended as preparation for advanced technical work in the engineering profession, or subsequent pursuit of a PhD.

In addition, the department offers MS and PhD programs in computer engineering jointly with CSE, and a PhD program in applied ocean science jointly with MAE and Scripps Institution of Oceanography.

Admission to an ECE graduate program is in accordance with the general requirements of the UC San Diego graduate division, and requires at least a BS degree in engineering, physical sciences, or mathematics with a minimum upper-division GPA of 3.0. Applicants must provide three letters of recommendation and recent GRE General Test scores. TOEFL or IELTS scores are required from international applicants whose native language is not English. Applicants should be aware that the university does not permit duplication of degrees.

Support: The department makes every effort to provide financial support for PhD students who are making satisfactory progress. Support may take the form of a fellowship, teaching assistantship, research assistantship, or some combination thereof. International students will not be admitted unless there is reasonable assurance that support can be provided for the duration of their PhD program students in the MS program may also obtain support through teaching or research assistantships, but this is less certain.

Advising: Students should seek advice on requirements and procedures from the departmental graduate office and/or the departmental website <http://www.ece.ucsd.edu>. All students will be assigned a faculty academic adviser upon admission and are strongly encouraged to discuss their academic program with their adviser immediately upon arrival and subsequently at least once per academic year.

«ECE COURSES»

For course descriptions not found in the UC San Diego General Catalog, 2013–14, please contact the department for more information.

The department will endeavor to offer the courses as outlined below; however, unforeseen circumstances sometimes require a change of scheduled offerings. Students are strongly advised to check the Schedule of Classes or the department before relying on the schedule below. For the names of the instructors who will teach the course, please refer to the quarterly Schedule of Classes. The departmental website <http://www.ece.ucsd.edu> includes the present best estimate of the schedule of classes for the entire academic year.

LOWER DIVISION»

15. Engineering Computation (4)

Students learn the C programming language with an emphasis on high-performance numerical computation. The commonality across programming languages of control structures, data structures, and I/O is also covered. Techniques for using Matlab to graph the results of C computations are developed. Prerequisites: a familiarity with basic Mathematics such as trigonometry functions and graphing is expected but this course assumes no prior programming knowledge.

25. Introduction to Digital Design (4)

This course emphasizes digital electronics. Principles introduced in lectures are used in laboratory assignments, which also serve to introduce experimental and design methods. Topics include Boolean algebra, combination and sequential logic, gates and their implementation in digital circuits. (Course material and/or program fees may apply.) Prerequisites: none.

30. Introduction to Computer Engineering (4)

The fundamentals of both the hardware and software in a computer system. Topics include: representation of information, computer organization and design, assembly and microprogramming, current technology in logic design. (Students who have taken CSE 30 may not take ECE 30 for credit.) Prerequisites: ECE 15 and 25 with grades of C– or better.

35. Introduction to Analog Design (4)

Fundamental circuit theory concepts, Kirchhoff's voltage and current laws, Thevenin's and Norton's theorems, loop and node analysis, time-varying signals, transient first order circuits, steady-state sinusoidal response. (Course material and/or program fees may apply.) Prerequisites: MATH 20A–B; MATH 20C and Physics 2B must be taken concurrently.

45. Circuits and Systems (4)

Steady-state circuit analysis, first and second order systems, Fourier Series and Transforms, time domain analysis, convolution, transient response, Laplace Transform, and filter design. Prerequisites: ECE 35.

65. Components and Circuits Laboratory (4)

Introduction to linear and nonlinear components and circuits. Topics will include: two terminal devices, bipolar and field-effect transistors, and large and small signal analysis of diode and transistor circuits. (Program or material fee may apply.) Prerequisites: ECE 35.

80. Photonics of Everyday Life (4)

This course is a general elective for students interested in the impact of photonic technology in our everyday lives. Topics include digital camera and photography, photography vs. holography, holograms for counterfeit, LCD display and optical storage (CD and DVD) in computers, some varieties of lasers, differences between laser light and ordinary light, optics for telecom, telescope, microscope, spectroscopy, and biophotonics. Prerequisites: simple concepts of calculus (see instructor), or MATH 10A or 20A.

85. iTunes 101: A Survey of Information Technology (4)

Topics include how devices such as iPods and iPhones generate, transmit, receive and process information (music, images, video, etc.), the relationship between technology and issues such as privacy and "net-neutrality," and current topics related to information technology. Prerequisites: none.

87. Freshman Seminar (1)

The Freshman Seminar program is designed to provide new students with the opportunity to explore an intellectual topic with a faculty member in a small seminar setting. Freshman Seminars are offered in all campus departments and undergraduate colleges, and topics vary from quarter to quarter. Enrollment is limited to fifteen to twenty students, with preference given to entering freshmen. Prerequisites: none.

90. Undergraduate Seminar (1)

This seminar class will provide a broad review of current research topics in both electrical engineering and computer engineering. Typical subject areas are signal processing, VLSI design, electronic materials and devices, radio astronomy, communications, and optical computing. Prerequisites: none.

UPPER DIVISION»**100. Linear Electronic Systems (4)**

Linear active circuit and system design. Topics include frequency response; use of Laplace transforms; design and stability of filters using operational amplifiers. Integrated lab and lecture involves analysis, design, simulation, and testing of circuits and systems. Prerequisites: ECE 15, ECE 25, ECE 35, ECE 45 and ECE 65.

101. Linear Systems Fundamentals (4)

Complex variables. Singularities and residues. Signal and system analysis in continuous and discrete time. Fourier series and transforms. Laplace and z-transforms. Linear Time Invariant Systems. Impulse response, frequency response, and transfer functions. Poles and zeros. Stability. Convolution. Sampling. Aliasing. Prerequisites: ECE 45 with grade of C– or better.

102. Introduction to Active Circuit Design (4)

Nonlinear active circuits design. Nonlinear device models for diodes, bipolar and field-effect transistors. Linearization of device models and small-signal equivalent circuits. Circuit designs will be simulated by computer and tested in the laboratory. Course material and/or program fee may apply. Prerequisites: ECE 15, 25, 35, 45 and 65.

103. Fundamentals of Devices and Materials (4)

Introduction to semiconductor materials and devices. Semiconductor crystal structure, energy bands, doping, carrier statistics, drift and diffusion, p-n junctions, metal-semiconductor junctions. Bipolar junction transistors: current flow, amplification, switching, nonideal behavior. Metal-oxide-semiconductor structures, MOSFETs, device scaling. Prerequisites: PHYS 2D or PHYS 4D and 4E with grades of C– or better.

107. Electromagnetism (4)

Electrostatics and magnetostatics; electrodynamics; Maxwell's equations; plane waves; skin effect. Electromagnetics of transmission lines: reflection and transmission at discontinuities, Smith chart, pulse propagation, dispersion. Rectangular waveguides. Dielectric and magnetic properties of materials. Electromagnetics of circuits. Prerequisites: PHYS 2A–D or 4A–E and ECE 45 with grades of C– or better.

108. Digital Circuits (4)

A transistor-level view of digital integrated circuits. CMOS combinational logic, ratioed logic, noise margins, rise and fall delays, power dissipation, transmission gates. Short channel MOS model, effects on scaling. Sequential circuits, memory and array logic circuits. Three hours of lecture, one hour of discussion, three hours of laboratory. Prerequisites: ECE 35, 45, and 65; ECE 30 or CSE 30; MATH 20C-D-F; and PHYS 2A-C.

109. Engineering Probability and Statistics (4)

Axioms of probability, conditional probability, theorem of total probability, random variables, densities, expected values, characteristic functions, transformation of random variables, central limit theorem. Random number generation, engineering reliability, elements of estimation, random sampling, sampling distributions, tests for hypothesis. Students who completed MATH 180A–B, MATH 183, MATH 186, Econ. 120A, or Econ. 120AH will not receive credit for ECE 109. Prerequisites: MATH 20A-B-C-D-F, with grades of C– or better. ECE 101 recommended.

111. Advanced Digital Design Project (4)

Advanced topics in digital circuits and systems. Use of computers and design automation tools. Hazard elimination, synchronous/asynchronous FSM synthesis, synchronization and arbitration, pipelining and timing issues. Problem sets and design exercises. A large-scale design project. Simulation and/or rapid prototyping. Prerequisites: ECE 108 or CSE 140 with grades of C– or better.

118. Computer Interfacing (4)

Interfacing computers and embedded controllers to the real world: busses, interrupts, DMA, memory mapping, concurrency, digital I/O, standards for serial and parallel communications, A/D, D/A, sensors, signal conditioning, video, and closed loop control. Students design and construct an interfacing project. (Course material and/or program fees may apply.) Prerequisites: ECE 30 or CSE 30 and ECE 35, 45, 65.

120. Solar System Physics (4)

General introduction to planetary bodies, the overall structure of the solar system, and space plasma physics. Course emphasis will be on the solar atmosphere, how the solar wind is produced, and its interaction with both magnetized and unmagnetized planets (and comets). Prerequisites: PHYS 2A–C or 4A–D, MATH 20A–B, 20C or 21C with grades of C– or better.

123. Antenna Systems Engineering (4)

The electromagnetic and systems engineering of radio antennas for terrestrial wireless and satellite communications. Antenna impedance, beam pattern, gain, and polarization. Dipoles, monopoles, paraboloids, phased arrays. Power and noise budgets for communication links. Atmospheric propagation and multipath. Prerequisites: ECE 107 with a grade of C– or better. (W or S)

134. Electronic Materials Science of Integrated Circuits (4)

Electronic materials science with emphasis on topics pertinent to microelectronics and VLSI technology. Concept of the course is to use components in integrated circuits to discuss structure, thermodynamics, reaction kinetics, and electrical properties of materials. Prerequisites: PHYS 2C–D with grades of C– or better.

135A. Semiconductor Physics (4)

Crystal structure and quantum theory of solids; electronic band structure; review of carrier statistics, drift and diffusion, p-n junctions; nonequilibrium carriers, imrefs, traps, recombination, etc; metal-semiconductor junctions and heterojunctions. Prerequisites: ECE 103 with a grade of C– or better.

135B. Electronic Devices (4)

Structure and operation of bipolar junction transistors, junction field-effect transistors, metal-oxide-semiconductor diodes and transistors. Analysis of dc and ac characteristics. Charge control model of dynamic behavior. Prerequisites: ECE 135A with a grade of C– or better.

136L. Microelectronics Laboratory (4)

Laboratory fabrication of diodes and field effect transistors covering photolithography, oxidation, diffusion, thin film deposition, etching and evaluation of devices. (Course material and/or program fees may apply.) Prerequisites: ECE 103.

138L. Microstructuring Processing Technology Laboratory (4)

A laboratory course covering the concept and practice of microstructuring science and technology in fabricating devices relevant to sensors, lab-chips and related devices. (Course material and/or program fees may apply.) Prerequisites: upper-division standing for science and engineering students.

139. Semiconductor Device Design and Modeling (4)

Device physics of modern field effect transistors and bipolar transistors, including behavior of submicron structures. Relationship between structure and circuit models of transistors. CMOS and BiCMOS technologies. Emphasis on computer simulation of transistor operation and application in integrated circuits. Prerequisites: ECE 135A–B with grades of C– or better.

145AL-BL-CL. Acoustics Laboratory (4-4-4)

Automated laboratory based on H-P GPIB controlled instruments. Software controlled data collection and analysis. Vibrations and waves in strings and bars of electromechanical systems and transducers. Transmissions, reflection, and scattering of sound waves in air and water. Aural and visual detection. Prerequisites: ECE 107 with a grade of C– or better or consent of instructor.

146. Introduction to Magnetic Recording (4)

A laboratory introduction to the writing and reading of digital information in a disk drive. Basic magnetic recording measurements on state-of-art disk drives to evaluate signals, noise, erasure, and nonlinearities that characterize this channel. Lectures on the recording process will allow comparison of measurements with basic voltage expressions. E/M FEM software utilized to study geometric effects on the record and play transducers. Prerequisites: ECE 107 with a grade of C– or better.

153. Probability and Random Processes for Engineers (4)

Random processes. Stationary processes: correlation, power spectral density. Gaussian processes and linear transformation of Gaussian processes. Point processes. Random noise in linear systems. Prerequisites: ECE 109 with a grade of C– or better.

154A. Communications Systems I (4)

Study of analog modulation systems including AM, SSB, DSB, VSB, FM, and PM. Performance analysis of both coherent and noncoherent receivers, including threshold effects in FM. Prerequisites: ECE 101 and 153 with a grade of C– or better.

154B. Communications Systems II (4)

Design and performance analysis of digital modulation techniques, including probability of error results for PSK, DPSK, and FSK. Introduction to effects of intersymbol interference and fading. Detection and estimation theory, including optimal receiver design and maximum-likelihood parameter estimation. Prerequisites: ECE 154A with a grade of C– or better.

154C. Communications Systems III (4)

Introduction to information theory and coding, including entropy, average mutual information, channel capacity, block codes and convolutional codes. Prerequisites: ECE 154B with a grade of C– or better.

155A. Digital Recording Systems (4)

This course will be concerned with modulation and coding techniques for digital recording channels. Prerequisites: ECE 109 and 153 with grades of C– or better and concurrent registration in ECE 154A required. Department stamp required.

155B. Digital Recording Projects I (4)

Students registered in this course work one-on-one with a researcher on a project involving the design and evaluation of a digital recording system based upon material covered in ECE 155A. Prerequisites: ECE 155A with grade of C– or better.

Concurrent registration in ECE 154B. Department stamp required.

155C. Digital Recording Projects II (4)

Students registered in this course work one-on-one with a researcher on a project involving the design and evaluation of a digital recording system based upon material covered in ECE 155A. The project can be a continuation of a project initiated in Digital Recording Projects I or it can be an entirely new project. Prerequisites: ECE 155B with grade of C– or better.

Concurrent registration in ECE 154C. Department stamp required.

156. Sensor Networks (4)

Characteristics of chemical, biological, seismic, and other physical sensors; signal processing techniques supporting distributed detection of salient events; wireless communication and networking protocols supporting formation of robust sensor fabrics; current experience with low power, low cost sensor deployments. Undergraduate students must take a final exam; graduate students must write a term paper or complete a final project. Cross-listed with MAE 149 and SIO 238.

Prerequisites: upper-division standing and consent of instructor, or graduate student in science and engineering.

157A. Communications Systems Laboratory I (4)

Experiments in the modulation and demodulation of baseband and passband signals. Statistical characterization of signals and impairments. (Course material and/or program fees may apply.) Prerequisites: ECE 154A with a grade of C+ or better.

157B. Communications Systems Laboratory II (4)

Advanced projects in communication systems. Students will plan and implement design projects in the laboratory, updating progress weekly and making plan/design adjustments based upon feedback. (Course material and/or program fees may apply.) Prerequisites: ECE 154A with a grade of C+ or better.

158A. Data Networks I (4)

Layered network architectures, data link control protocols and multiple-access systems, performance analysis. Flow control; prevention of deadlock and throughput degradation. Routing, centralized and decentralized schemes, static dynamic algorithms. Shortest path and minimum average delay algorithms. Comparisons. Prerequisites: ECE 109 with a grade of C– or better. ECE 159A recommended.

158B. Data Networks II (4)

Layered network architectures, data link control protocols and multiple-access systems, performance analysis. Flow control; prevention of deadlock and throughput degradation. Routing, centralized and decentralized schemes, static dynamic algorithms. Shortest path and minimum average delay algorithms. Comparisons. Prerequisites: ECE 158A with a grade of C – or better.

159A. Queuing Systems: Fundamentals (4)

Analysis of single and multiserver queuing systems; queue size and waiting times. Modeling of telephone systems, interactive computer systems and the machine repair problems. Prerequisites: ECE 109 with a grade of C– or better.

159B. Queuing Systems: Computer Systems and Data Networks (4)

M/G/1 queuing systems. Computer systems applications: priority scheduling; time-sharing scheduling. Open and closed queuing networks; modeling and performance of interactive computer systems. Elements of computer-communication networks: stability and delay analysis; optimal design issues. Prerequisites: ECE 159A with a grade of C– or better.

161A. Introduction to Digital Signal Processing (4)

Review of discrete-time systems and signals, Discrete-Time Fourier Transform and its properties, the Fast Fourier Transform, design of Finite Impulse Response (FIR) and Infinite Impulse Response (IIR) filters, implementation of digital filters.

Prerequisites: ECE 101.

161B. Digital Signal Processing I (4)

Sampling and quantization of baseband signals; A/D and D/A conversion, quantization noise, oversampling and noise shaping. Sampling of bandpass signals, undersampling downconversion, and Hilbert transforms. Coefficient quantization, roundoff noise, limit cycles and overflow oscillations. Insensitive filter structures, lattice and wave digital filters. Systems will be designed and tested with Matlab, implemented with DSP processors and tested in the laboratory. Prerequisites: ECE 161A with a grade of C– or better.

161C. Applications of Digital Signal Processing (4)

This course discusses several applications of DSP. Topics covered will include: speech analysis and coding; image and video compression and processing. A class project is required, algorithms simulated by Matlab. Prerequisites: ECE 161A.

163. Electronic Circuits and Systems (4)

Analysis and design of analog circuits and systems. Feedback systems with applications to operational amplifier circuits. Stability, sensitivity, bandwidth, compensation. Design of active filters. Switched capacitor circuits. Phase-locked loops. Analog-to-digital and digital-to-analog conversion. (Course material and/or program fees may apply.) Prerequisites: ECE 101 and 102 with grades of C– or better.

164. Analog Integrated Circuit Design (4)

Design of linear and nonlinear analog integrated circuits including operational amplifiers, voltage regulators, drivers, power stages, oscillators, and multipliers. Use of feedback and evaluation of noise performance. Parasitic effects of integrated circuit technology. Laboratory simulation and testing of circuits. Prerequisites: ECE 102 with a grade of C– or better. ECE 163 recommended.

165. Digital Integrated Circuit Design (4)

VLSI digital systems. Circuit characterization, performance estimation, and optimization. Circuits for alternative logic styles and clocking schemes. Subsystems include ALUs, memory, processor arrays, and PLAs. Techniques for gate arrays, standard cell, and custom design. Design and simulation using CAD tools. (Students who have taken CSE 143 may not take ECE 165 for credit.) Prerequisites: ECE 108 with a grade of C– or better.

166. Microwave Systems and Circuits (4)

Waves, distributed circuits, and scattering matrix methods. Passive microwave elements. Impedance matching. Detection and frequency conversion using microwave diodes. Design of transistor amplifiers including noise performance. Circuits designs will be simulated by computer and tested in the laboratory. (Course material and/or program fees may apply.) Prerequisites: ECE 102 and 107 with grades of C– or better.

171A. Linear Control System Theory (4)

Stability of continuous- and discrete-time single-input/single-output linear time-invariant control systems emphasizing frequency domain methods. Transient and steady-state behavior. Stability analysis by root locus, Bode, Nyquist, and Nichols plots. Compensator design. Prerequisites: ECE 45 or MAE 140.

171B. Linear Control System Theory (4)

Time-domain, state-variable formulation of the control problem for both discrete-time and continuous-time linear systems. State-space realizations from transfer function system description. Internal and input-output stability, controllability/observability, minimal realizations, and pole-placement by full-state feedback. Prerequisites: ECE 171A with a grade of C– or better.

172A. Introduction to Intelligent Systems: Robotics and Machine Intelligence (4)

This course will introduce basic concepts in machine perception. Topics covered will include edge detection, segmentation, texture analysis, image registration, and compression. Prerequisites: ECE 101 with a grade of C– or better. ECE 109 recommended.

174. Introduction to Linear and Nonlinear Optimization with Applications (4)

The linear least squares problem, including constrained and unconstrained quadratic optimization and the relationship to the geometry of linear transformations. Introduction to nonlinear optimization. Applications to signal processing, system identification, robotics, and circuit design. Prerequisites: Math 20F, ECE 15 and ECE 100, or consent of instructor.

175A. Elements of Machine Intelligence: Pattern Recognition and Machine Learning (4)

Introduction to pattern recognition and machine learning. Decision functions. Statistical pattern classifiers. Generative vs. discriminant methods for pattern classification. Feature selection. Regression. Unsupervised learning. Clustering. Applications of machine learning. Prerequisites: ECE 109 and ECE 174.

175B. Elements of Machine Intelligence: Probabilistic Reasoning and Graphical Models (4)

Bayes' rule as a probabilistic reasoning engine; graphical models as knowledge encoders; conditional independence and D-Separation; Markov random fields; inference in graphical models; sampling methods and Markov Chain Monte Carlo (MCMC); sequential data and the Viterbi and BCJR algorithms; The Baum-Welsh algorithm for Markov Chain parameter estimation. Prerequisites: ECE 175A.

180. Topics in Electrical and Computer Engineering (4)

Topics of special interest in electrical and computer engineering. Subject matter will not be repeated so it may be taken for credit more than once. Prerequisites: consent of instructor; department stamp.

181. Physical Optics and Fourier Optics (4)

Ray optics, wave optics, beam optics, Fourier optics, and electromagnetic optics. Ray transfer matrix, matrices of cascaded optics, numerical apertures of step and graded index fibers. Fresnel and Fraunhofer diffractions, interference of waves. Gaussian and Bessel beams, the ABCD law for transmissions through arbitrary optical systems. Spatial frequency, impulse response and transfer function of optical systems, Fourier transform and imaging properties of lenses, holography. Wave propagation in various (inhomogeneous, dispersive, anisotropic or nonlinear) media. (Course material and/or program fees may apply.) Prerequisites: ECE 103 and 107 with grades of C– or better.

182. Electromagnetic Optics, Guided-Wave, and Fiber Optics (4)

Polarization optics: crystal optics, birefringence. Guided-wave optics: modes, losses, dispersion, coupling, switching. Fiber optics: step and graded index, single and multimode operation, attenuation, dispersion, fiber optic communications. Resonator optics. (Course material and/or program fees may apply.) Prerequisites: ECE 103 and 107 with grades of C– or better.

183. Optical Electronics (4)

Quantum electronics, interaction of light and matter in atomic systems, semiconductors. Laser amplifiers and laser systems. Photodetection. Electrooptics and acoustooptics, photonic switching. Fiber optic communication systems. Labs: semiconductor lasers, semiconductor photodetectors. (Course material and/or program fees may apply.) Prerequisites: ECE 103 and 107 with grades of C– or better.

184. Optical Information Processing and Holography (4)

(Conjoined with ECE 241AL) Labs: optical holography, photorefractive effect, spatial filtering, computer generated holography. Students enrolled in ECE 184 will receive four units of credit; students enrolled in ECE 241AL will receive two units of credit. (Course material and/or program fees may apply.) Prerequisites: ECE 182 with a grade of C– or better.

185. Lasers and Modulators (4)

(Conjoined with ECE 241BL) Labs: CO₂ laser, HeNe laser, electrooptic modulation, acoustooptic modulation, spatial light modulators. Students enrolled in ECE 185 will receive four units of credit; students enrolled in ECE 241BL will receive two units of credit. (Course material and/or program fees may apply.) Prerequisites: ECE 183 with a grade of C– or better.

187. Introduction to Biomedical Imaging and Sensing (4)

Image processing fundamentals: imaging theory, image processing, pattern recognition; digital radiography, computerized tomography, nuclear medicine imaging, nuclear magnetic resonance imaging, ultrasound imaging, microscopy imaging. Prerequisites: MATH 20A-B-F, 20C or 21C, 20D or 21D, PHYS 2A–D, ECE 101 (may be taken concurrently) with grades of C– or better.

188. Topics in Electrical and Computer Engineering with Laboratory (4)

Topics of special interest in electrical and computer engineering with laboratory. Subject matter will not be repeated so it may be taken for credit up to three times. Prerequisites: upper-division standing.

190. Engineering Design (4)

Students complete a project comprising at least 50 percent or more engineering design to satisfy the following features: student creativity, open-ended formulation of a problem statement/specifications, consideration of alternative solutions/realistic constraints. Written final report required. Prerequisites: students enrolling in this course must have completed all of the breadth courses and one depth course. The department stamp is required to enroll in ECE 190. (Specifications and enrollment forms are available in the undergraduate office.)

191. Engineering Group Design Project (4)

Groups of students work to design, build, demonstrate, and document an engineering project. All students give weekly progress reports of their tasks and contribute a section to the final project report. Prerequisites: completion of all of the breadth courses and one depth course.

192. Senior Seminar (1)

The Senior Seminar Program is designed to allow senior undergraduates to meet with faculty members in a small setting to explore an intellectual topic in ECE (at the upper-division level). Topics will vary from quarter to quarter. Senior Seminars may be taken for credit up to four times, with a change in topic, and permission of the department. ECE 192 is no longer valid for ECE design credit, students should take ECE 190 instead. Prerequisites: department stamp and/or consent of instructor.

193H. Honors Project (4–8)

An advanced reading or research project performed under the direction of an ECE faculty member. Must contain enough design to satisfy the ECE program's four-unit design requirement. Must be taken for a letter grade. May extend over two quarters with a grade assigned at completion for both quarters. Prerequisites: admission to the ECE departmental honors program.

195. Teaching (2 or 4)

Teaching and tutorial activities associated with courses and seminars. Not more than four units of ECE 195 may be used for satisfying graduation requirements. (P/NP grades only.) Prerequisites: consent of the department chair.

197. Field Study in Electrical and Computer Engineering (4, 8, 12, or 16)

Directed study and research at laboratories and observatories away from the campus. (P/NP grades only.) Prerequisites: consent of instructor and approval of the department.

198. Directed Group Study (2 or 4)

Topics in electrical and computer engineering whose study involves reading and discussion by a small group of students under direction of a faculty member. (P/NP grades only.) Prerequisites: consent of instructor.

199. Independent Study for Undergraduates (2 or 4)

Independent reading or research by special arrangement with a faculty member. (P/NP grades only.) Prerequisites: consent of instructor.



COURSE PLANS & WORKSHEETS

<http://www.ece.ucsd.edu/plans>

ECE Freshman Plans

PLEASE NOTE: All courses used to satisfy major requirements must be taken for a LETTER GRADE.

ELECTRICAL ENGINEERING (B.S.)			
	FALL	WINTER	SPRING
Year 1	MATH 20A	MATH 20B	MATH 20C
	CHEM 6A	PHYS 2A	PHYS 2B
	ECE 15	ECE 25	ECE 35
Year 2	MATH 20D	MATH 20F	MATH 20E
	PHYS 2C	PHYS 2D	ECE 30
	ECE 45	ECE 65	ECE 109
Year 3	ECE 100	ECE 103	Depth #1
	ECE 101	ECE 107	Depth #2
	ECE 102	ECE 108	Elective #1
Year 4	Depth #3	Depth #4	Depth #5
	Elective #2	Eng. Design	Elective #5
	Elective #3	Elective #4	Elective #6

ENGINEERING PHYSICS (B.S.)			
	FALL	WINTER	SPRING
Year 1	MATH 20A	MATH 20B	MATH 20C
	CHEM 6A	PHYS 2A	PHYS 2B
	ECE 15	ECE 25	ECE 35
Year 2	MATH 20D	MATH 20F	MATH 20E
	PHYS 2C	PHYS 2D	ECE 30
	ECE 45	PHYS Lab	ECE 109
Year 3	ECE 100	MATH 110A	ECE 107
	ECE 102	ECE 101	ECE 108
	PHYS 110A	ECE 103	PHYS 130A
Year 4	Depth #1*	Depth #2*	Eng. Design
	PHYS 130B	Elective #1	Elective #3
	PHYS 140A	Elective #2	Elective #4

DEPTH SEQUENCES:
 Communication Systems: ECE 153, ECE 154A, ECE 154B, ECE 154C, and ECE 158A
 Electronics Circuits & Systems: ECE 163, 164, 165, 166
 Electronic Devices & Materials: ECE 135A, ECE 135B, ECE 136L, ECE 183
 Machine Learning & Controls: ECE 171A, ECE 174, ECE 175A, one of ECE 171B, ECE 172A, or ECE 175B
 Photonics: ECE 181, ECE 182, ECE 183 and either ECE 184 or ECE 185
 Signal and Image Processing: ECE 153, ECE 161A, ECE 161B, ECE 161C
 Computer System Design: CSE 141, ECE 165 and any two of ECE 118, ECE 158A, ECE 111 and CSE 143

* ECE 123 & 166 or ECE 135A & 135B or ECE 182 & (181 or 183). The 2 depth courses indicated * are not always offered in fall and winter, consult with the ECE Undergraduate Office for more detailed information or visit our website.



ECE Freshman Plans

PLEASE NOTE: All courses used to satisfy major requirements must be taken for a LETTER GRADE.

COMPUTER ENGINEERING (B.S.)			
	FALL	WINTER	SPRING
Year 1	MATH 20A	MATH 20B	MATH 20C
	CSE 11 or CSE 8A/8AL/B	CSE 12	CSE 20
		CSE 15L	PHYS 2A
		CSE 91	
Year 2	MATH 20D	MATH 20F	CSE 30
	PHYS 2B	PHYS 2C	ECE 65
	ECE 35	ECE 45	ECE 109
	CSE 21		
Year 3	CSE 110	CSE 100	CSE 141 & 141L
	CSE 140 & 140L	CSE 101	ECE 111 or ECE 118
	ECE 101	ECE 108	Tech. Elective
Year 4	CSE 120	Tech. Elective	Tech. Elective
	Tech. Elective	Tech. Elective	Tech. Elective

ELECTRICAL ENGINEERING & SOCIETY (B.A.)			
	FALL	WINTER	SPRING
Year 1	MATH 20A	MATH 20B	MATH 20C
	CHEM 6A	PHYS 2A	PHYS 2B
	ECE 15	ECE 25	ECE 35
Year 2	MATH 20D	MATH 20F	MATH 20E
	PHYS 2C	PHYS 2D	ECE 30
	ECE 45	ECE 65	S/H Elective
		S/H Elective	
Year 3	ECE 100	ECE 103	Depth #1
	ECE 101	ECE 107	Depth #2
	ECE 102	ECE 108	ECE 109
Year 4	Depth #3	Depth #5	Depth #6
	Depth #4	Eng. Design	E. Elective
	E. Elective	E. Elective	

ECE Transfer Plans

PLEASE NOTE: All courses used to satisfy major requirements must be taken for a LETTER GRADE. These plans assume that students have completed equivalent lower division MATH, PHYS and CHEM courses at the community college that are required for the major. *Due to six different college requirements, only major requirements are listed.*

ELECTRICAL ENGINEERING (B.S.)			
	FALL	WINTER	SPRING
Year 1	ECE 15	MATH 20E	ECE 30
	ECE 25	ECE 45	ECE 65
	ECE 35		ECE 109
Year 2	ECE 100	ECE 103	Depth #1
	ECE 101	ECE 107	Elective #1
	ECE 102	ECE 108	Elective #2
Year 3	Depth #2	Depth #4	Depth #5
	Depth #3	Eng. Design	Elective #5
	Elective #3	Elective #4	Elective #6

ENGINEERING PHYSICS (B.S.)			
	FALL	WINTER	SPRING
Year 1	ECE 15	MATH 20E	ECE 30
	ECE 25	ECE 45	ECE 65
	ECE 35		ECE 109
Year 2	PHYS 110A	ECE 100	ECE 107
	ECE 100	ECE 102	ECE 108
	ECE 103	MATH 110A	PHYS 130A
Year 3	Depth #1*	Depth #2*	Elective #2
	PHYS 130B	Eng. Design	Elective #3
	PHYS 140A	Elective #1	Elective #4

DEPTH SEQUENCES:
 Communication Systems: ECE 153, ECE 154A, ECE 154B, ECE 154C, and ECE 158A

Students must select an upper division ECE course to satisfy the 5th Depth course in the following sequences:

Electronics Circuits & Systems: ECE 163, 164, 165, 166
 Electronic Devices & Materials: ECE135A, ECE 135B, ECE 136L, ECE 183
 Machine Learning & Controls: ECE 171A, ECE 174, ECE 175A, one of ECE 171B, ECE 172A, or ECET175B
 Photonics: ECE 181, ECE 182, ECE 183 and either ECE 184 or ECE 185
 Signal and Image Processing: ECE 153, ECE 161A, ECE 161B, ECE 161C
 Computer System Design: CSE 141, ECE 165 and any two of ECE 118, ECE 158A, ECE 111 and CSE 143

* ECE 123 & 166 or ECE 135A & 135B or ECE 182 & (181 or 183): The 2 depth courses indicated * are not always offered in fall and winter, consult with the ECE Undergraduate Office for more detailed information or visit our website.



ECE Transfer Plans

PLEASE NOTE: All courses used to satisfy major requirements must be taken for a LETTER GRADE. These plans assume that students have completed equivalent lower division MATH, PHYS and CHEM courses at the community college that are required for the major. Due to six different college requirements, only major requirements are listed.

COMPUTER ENGINEERING (B.S.)			
	FALL	WINTER	SPRING
Year 1	CSE 11 or CSE 8A/8AL/B	CSE 12	CSE 21
	ECE 35	CSE 15L	CSE 30
		CSE 20	ECE 65
	ECE 45		
Year 2	CSE 110	CSE 100	ECE 109
	CSE 140 & 140L	CSE 101	CSE 141 & 141L
	ECE 101	ECE 108	ECE 111 or ECE 118
Year 3	CSE 120	Tech. Elective	Tech. Elective
	Tech. Elective	Tech. Elective	Tech. Elective
	Tech. Elective		
	Tech. Elective		

ELECTRICAL ENGINEERING AND SOCIETY (B.A.)			
	FALL	WINTER	SPRING
Year 1	ECE 15	MATH 20E	ECE 30
	ECE 25	ECE 45	ECE 65
	ECE 35	S/H Elective	S/H Elective
Year 2	ECE 100	ECE 103	Depth #1
	ECE 101	ECE 107	Depth #2
	ECE 102	ECE 108	ECE 109
Year 3	Depth #3	Depth #5	Depth #6
	Depth #4	Eng. Design	E. Elective
	E. Elective	E. Elective	

Name: _____ PID: _____

Email: _____ Date: _____

MAJOR REQUIREMENTS:

Lower Division

- MATH 20A (Calculus I)
- MATH 20B (Calculus II)
- MATH 20C (Calculus III)
- MATH 20D (Differential Equations)
- MATH 20E (Vector Calculus)
- MATH 20F (Linear Algebra)
- PHYS 2A (Mechanics)
- PHYS 2B (Electricity and Magnetism)
- PHYS 2C (Flu, Wav, Thermodyn, Optics)
- PHYS 2D (Relativity & Quantum)
- CHEM 6A (General Chemistry I)
- ECE 15 (Engineering Computation)
- ECE 25 (Intro to Digital Design)
- ECE 30 (Intro to Computer Eng)
- ECE 35 (Intro to Analog Design)
- ECE 45 (Circuits & Systems)
- ECE 65 (Components & Circuits Lab)

Upper Division

- ECE 100 (Linear Electronic Systems)
- ECE 101 (Linear Systems Fundamentals)
- ECE 102 (Intro Active Circuit Design)
- ECE 103 (Fundamentals/Devices & Matris)
- ECE 107 (Electromagnetism)
- ECE 108 (Digital Circuits)
- ECE 109 (Eng. Probability & Stats)
- DEPTH (see below for sequences):
- _____
- _____
- _____
- _____
- Design (Pick One):
- ECE 111(Adv Digital Design Proj) or
- ECE 118 (Computer Interfacing) or
- ECE 191 (Eng Group Design Proj) or
- ECE 190 (Engineering Design) or
- ECE 155B or 155C (Digital Recording Projs)
- Professional Electives (3 Courses):
- _____
- _____
- _____
- Technical Electives (3 Courses):
- _____
- _____
- _____

Possible Depth Sequences:

Communication Systems: ECE 153, ECE 154A, ECE 154B, ECE 154C, and ECE 158A

Students must select an upper division ECE course to satisfy the 5th Depth Course in the following sequences:

Electronics Circuits & Systems: ECE 163, 164, 165, 166

Electronic Devices & Materials: ECE135A, ECE 135B, ECE 136I, ECE 183

Machine Learning & Controls: ECE 171A, ECE 174, ECE 175A, one of ECE 171B, ECE 172A, or ECE175B

Photonics: ECE 181, ECE 182, ECE 183 and either ECE 184 or ECE 185

Signal and Image Processing: ECE 153, ECE 161A, ECE 161B, ECE 161C

Computer System Design: CSE 141, ECE 165 and any two of ECE 118, ECE 158A, ECE 111 and CSE 143

	FALL	WINTER	SPRING	SUMMER
Year 1				
Year 2				
Year 3				
Year 4				

ALL courses used to satisfy major requirements **MUST** be taken for a **LETTER GRADE**.

ENGINEERING PHYSICS PLANNING WORKSHEET

Name: _____ PID: _____

Email: _____ Date: _____

MAJOR REQUIREMENTS:

Lower Division

- MATH 20A (Calculus I)
- MATH 20B (Calculus II)
- MATH 20C (Calculus III)
- MATH 20D (Differential Equations)
- MATH 20E (Vector Calculus)
- MATH 20F (Linear Algebra)

- PHYS 2A (Mechanics)
- PHYS 2B (Electricity and Magnetism)
- PHYS 2C (Flu, Wav, Thermodyn, Optics)
- PHYS 2D (Relativity & Quantum)
- PHYS 2DL (Phys Lab-Modern Physics)
- CHEM 6A (General Chemistry I)

- ECE 15 (Engineering Computation)
- ECE 25 (Intro to Digital Design)
- ECE 30 (Intro to Computer Eng)
- ECE 35 (Intro to Analog Design)
- ECE 45 (Circuits & Systems)
- ECE 65 (Components & Circuits Lab)

Upper Division

- ECE 100 (Linear Electronic Systems)
- ECE 101 (Linear Systems Fundamentals)
- ECE 102 (Intro Active Circuit Design)
- ECE 103 (Fundamentals/Devices & Matrl's)
- ECE 107 (Electromagnetism)
- ECE 108 (Digital Circuits)
- ECE 109 (Eng. Probability & Stats)

DEPTH:

- PHYS 110A (Mechanics)
- PHYS 130A (Quantum Physics)
- PHYS 130B (Quantum Physics)
- PHYS 140A (Stat & Thermal Physics)
- MATH 110A (Intro PartI Dif Equations)
- ECE 123 & 166 or ECE 135A & 135B or ECE 182 & (181 or 183)

Design (Pick One):

- ECE 111(Adv Digital Design Proj) or
- ECE 118 (Computer Interfacing) or
- ECE 191 (Eng Group Design Proj) or
- ECE 190 (Engineering Design) or
- ECE 155B or 155C (Digital Recording Proj's)

Professional Electives (3 Courses):

- _____
- _____
- _____

Technical Electives (1 Course):

- _____

Notes:

All courses used to satisfy major requirements **MUST** be taken for a **LETTER GRADE**.

	FALL	WINTER	SPRING	SUMMER
Year 1				
Year 2				
Year 3				
Year 4				

Name: _____ PID: _____

Em ail: _____ Date: _____

MAJOR REQUIREMENTS:

Lower Division

- MATH 20A (Calculus I)
- MATH 20B (Calculus II)
- MATH 20C (Calculus III)
- MATH 20D (Differential Equations)
- MATH 20E (Vector Calculus)
- MATH 20F (Linear Algebra)

Upper Division

- ECE 100 (Linear Electronic Systems)
- ECE 101 (Linear Systems Fundamentals)
- ECE 102 (Intro Active Circuit Design)
- ECE 103 (Fundamentals/Devices & Maths)
- ECE 107 (Electromagnetism)
- ECE 108 (Digital Circuits)
- ECE 109 (Eng. Probability & Stats)

DEPTH (6 Courses):

- PHYS 2A (Mechanics)
- PHYS 2B (Electricity and Magnetism)
- PHYS 2C (Flu, Wav, Thermodyn, Optics)
- PHYS 2D (Relativity & Quantum)

- CHEM 6A (General Chemistry I)

- ECE 15 (Engineering Computation)
- ECE 25 (Intro to Digital Design)
- ECE 30 (Intro to Computer Eng)
- ECE 35 (Intro to Analog Design)
- ECE 45 (Circuits & Systems)
- ECE 65 (Components & Circuits Lab)

S/H Electives (2 Courses):

- _____
- _____

Design (Pick One):

- ECE 111(Adv Digital Design Proj) or
- ECE 118 (Computer Interfacing) or
- ECE 191 (Eng Group Design Proj) or
- ECE 190 (Engineering Design) or
- ECE 155B or 155C (Digital Recording Projs)

Technical Electives (3 Courses):

- _____
- _____
- _____

Notes:

ALL courses used to satisfy major requirements **MUST** be taken for a **LETTER GRADE**.

	FALL	WINTER	SPRING	SUMMER
Year 1				
Year 2				
Year 3				
Year 4				

«FACULTY ADVISORS»

ELECTRICAL ENGINEERING

Depth Advisors

Depth Sequence	Advisor	Room #	Phone #
Devices & Materials	Shadi Dayeh Deli Wang	Jacobs Hall 4803 Jacobs Hall 3808	858-534-5171 858-822-4723
Circuits & Systems	Bang Sup Song	Jacobs Hall 3805	858-822-3428
Machine Learning & Controls	Dave Sworder Ken Kreutz-Delgado	Jacobs Hall 6403 Jacobs Hall 5605	858-534-4498 858-534-7895
Photonics	Stojan Radic	Jacobs Hall 3404	858-534-4344
Communications Systems	Robert Lugannani	Jacobs Hall 4801	858-534-2702
Signal & Image Processing	Nuno Vasconcelos	Jacobs Hall 5602	858-534-5550

COMPUTER ENGINEERING

Bill Lin Andrew Kahng	Jacobs Hall 4406 EBU3 2134	858-822-1383 858-822-4884
--------------------------	-------------------------------	------------------------------

ENGINEERING PHYSICS

tba	tba	tba
-----	-----	-----

«ECE TUTORING PROGRAM»

FREE TUTORING DAILY!

NO APPOINTMENTS NEEDED

» **WHO:** ECE UNDERGRADUATE STUDENTS

» **WHEN:** MONDAY-FRIDAY 8-5 PM

*CHECK ECE.UCSD.EDU/TUTOR FOR CURRENT TUTORING SCHEDULES

» **WHERE:** JACOBS HALL 4600

» **QUESTIONS? EMAIL US!** ECETUTORS@ENG.UCSD.EDU

«IMPORTANT LINKS»

ECE UNDERGRADUATE WEBSITE	http://www.ece.ucsd.edu/undergrad
UCSD GENERAL CATALOG	http://www.ucsd.edu/catalog/curric/ECE-ug.html
ECE COURSE OFFERINGS	http://www.ece.ucsd.edu/classweb
VIRTUAL ADVISING CENTER	http://vac.ucsd.edu
TRITONLINK	http://students.ucsd.edu/
ECE FACULTY	http://www.ece.ucsd.edu/faculty_profile#top
IDEA STUDENT CENTER	http://www.jacobsschool.ucsd.edu/student/
CAREER SERVICES CENTER	http://career.ucsd.edu/
COUNSELING & PSYCHOLOGICAL SERVICES	http://caps.ucsd.edu/#students
STUDENT TRANSFER COURSE INFO SYSTEM	http://www.assist.org/web-assist/welcome.html
STUDY ABROAD	http://icenter.ucsd.edu/pao/
FINANCIAL AID OFFICE	http://students.ucsd.edu/finances/financial-aid/index.html

«NOTES»

«NOTES»



Electrical and Computer Engineering
Jacobs School of Engineering
University of California, San Diego
9500 Gilman Drive MC 0407
La Jolla, CA 92093